

The background of the entire page is a repeating pattern of stylized cow faces. Each cow is drawn with thick black outlines and features a large, solid black circle for an eye. The cows are arranged in a grid-like fashion, with some facing forward and others slightly angled. The overall style is graphic and minimalist.

**Dillon and Friends**

15th Oct -

7th Nov 2009

Carolyn Oliver

Invites you to the  
private views of

## Dillon and Friends

Thursday 15th October

6 – 9 pm

Saturday 17th October

12 – 5 pm

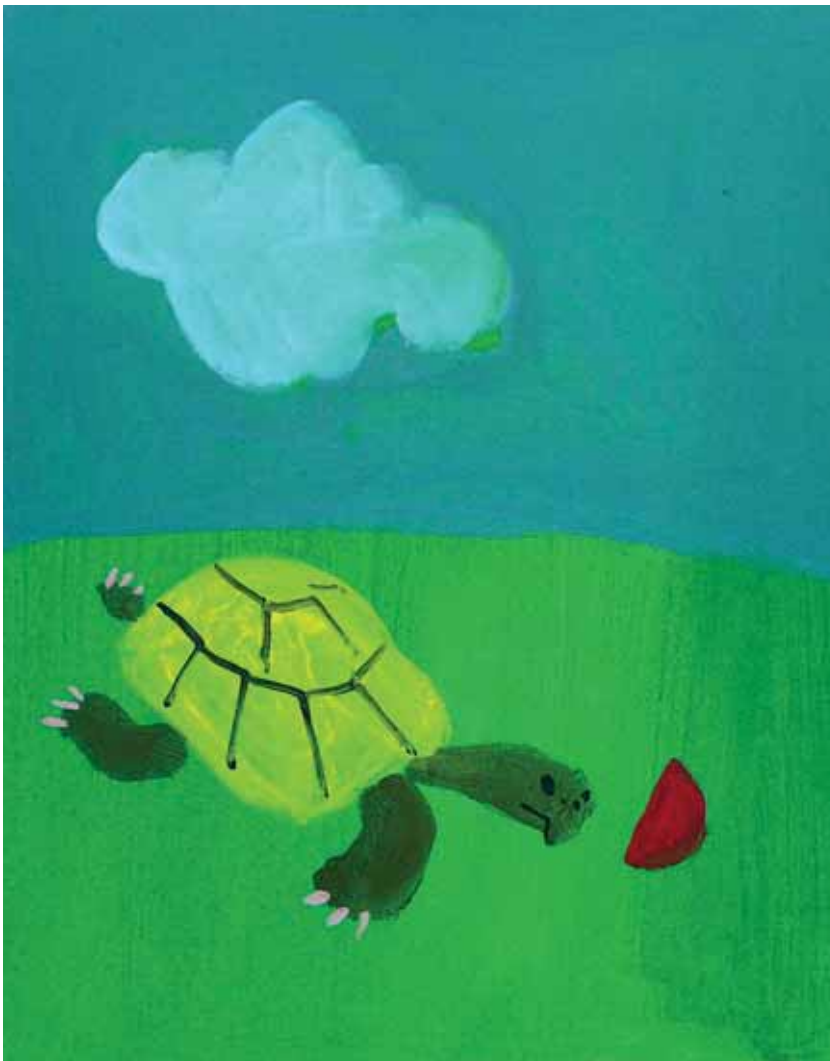
Drinks

OLIVER CONTEMPORARY

17 Bellevue Road  
Wandsworth Common  
London SW17 7EG

020 8767 8822





◀ Front Mary Ford *Cows* acrylic on board 23 x 28½ ins



David Ralph Simpson *Mute Cob* oil on board 7 x 7 ins ▲

◀ Matthew Batt *Dillon* acrylic on canvas 20 x 16 ins



Tony Scrivener *Cool Dog* mixed media on paper 5 x 7 ins ▲



Clare Sprawson *Cow in Pushkar, Rajasthan* watercolour on paper 9½ x 11 ins

OLIVER  
CONTEMPORARY

17 BELLEVUE ROAD LONDON SW17 7EG T/F 020 8767 8822